

INFECTION CONTROL NEWS LETTER

Taking Blood Cultures Best Practice

Blood cultures (BC) are important investigation in detecting bacteraemia and the need to reduce the risk of blood sample contamination.

Recommendations for taking BC that are clinically indicated and not as routine;-

- Core temperature out of normal range
- Focal signs of infections
- Abnormal heart rate (raised) blood pressure (low or raised) or respiratory rate (raised).
- Chills or rigors
- Raised or low white cell count
- New or worsening confusion

BC should ideally taken before administration of antibiotics, or before the next dose, with the exception of paediatric patients

BC should be collected by staff trained in the collection.

Two sets of cultures be taken from separate sites (**Do Not use existing peripheral lines or sites above the peripheral site**)

Central lines may be used and from a separate peripheral site, when a central line is suspected.

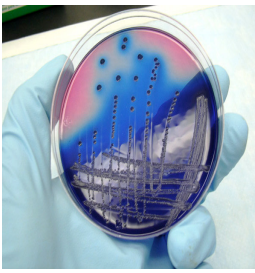
The venepuncture site must be thoroughly disinfected with **Persist plus and allowed to dry.**

Ensure operator hands are cleansed, once the site has dried do not palpate again.

Ensure the BC bottle top is disinfected and allowed to dry.

Please note: The use of blood collection adapter caps without winged blood collection sets is not recommended. There is a risk of not being able judge the sample volume and potential of backflow of BC media into patients veins.

Ref: Saving Lives NHS (UK)



INFECTION CONTROL